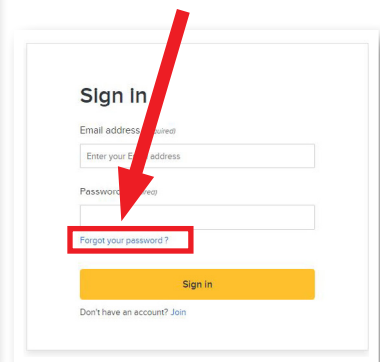
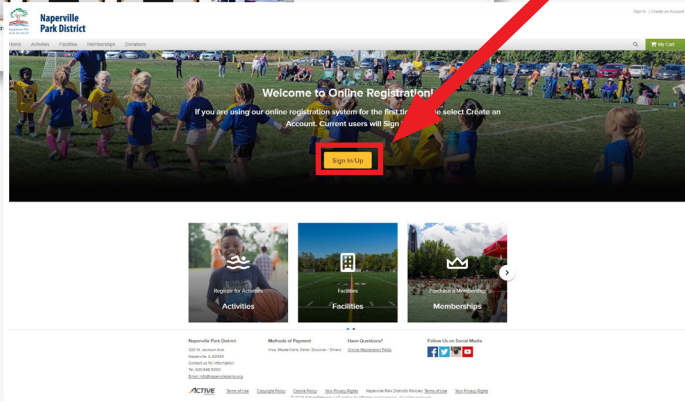
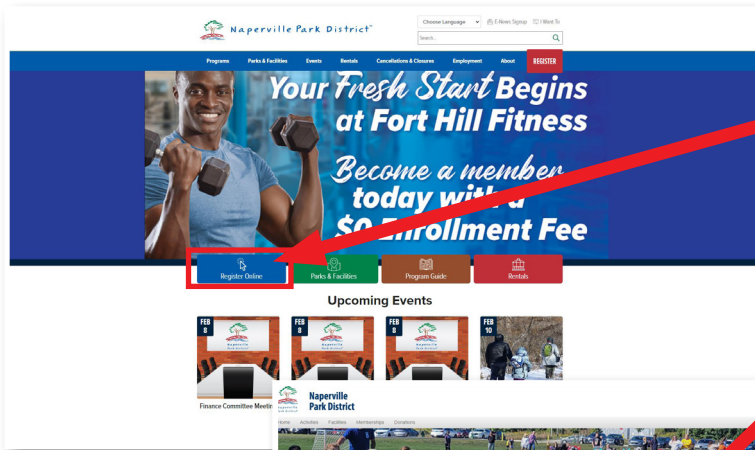


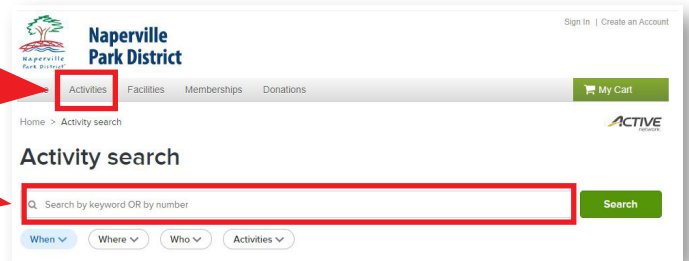
# Online Priority Garden Plot Registration Instructions

**1** Go to [www.napervilleparks.org](http://www.napervilleparks.org)  
From the homepage select Online Registration and then select Sign In.

**2** As a Park District garden plot participant you already have an account. Your login is the email that we used to send this information. If you don't know or never had a password, select **"Forgot your password?"**. Do not create a new account.

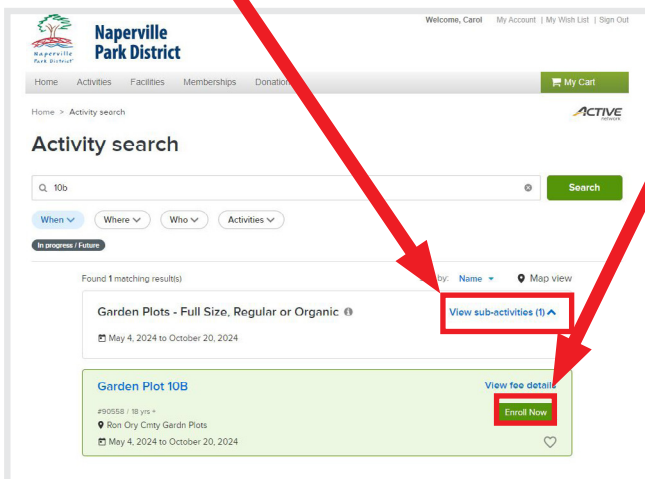


**3** At the top click "Activities".  
Enter garden plot number in the search bar below.

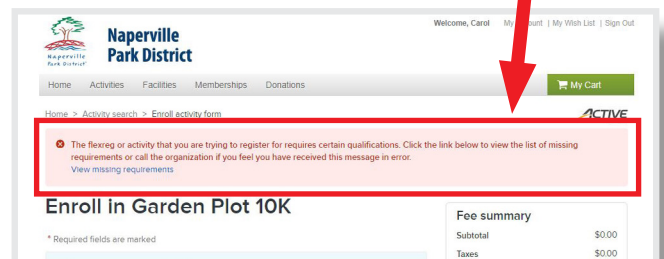


**4** Click on "View Sub-activities" button.  
You will then be able to click "Enroll Now" and select the family member that is the garden plot holder. Continue to register and make payment.

**Please note:** Clicking on the blue activity heading for your plot will provide more information on the garden plot season.



*If you are not the garden plot holder on record for that plot you will see this message and you will not be able to continue.*



**Please call Customer Service at 630-848-5000 with any questions.**